

20/10/2011

SILK4NET



Ing. Jorge Dennis Montaña Párraga

Agenda

SilkTest Open Agent Fundamentals

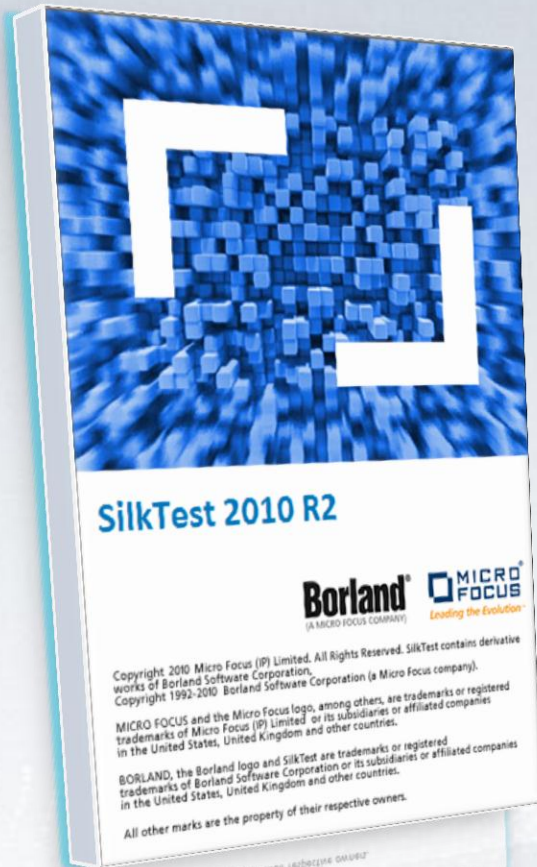
SilkTest technologies supported

What is Silk4NET?

Silk4NET Installation

How to use Silk4NET

SilkTest Open Agent Fundamentals



SilkTest Open Agent is the software that translates commands in your scripts into GUI-specific commands.

The Open Agent drives and monitors the application that you are testing

It has a powerful GUI objects recognition mechanism, uses XPath notations for locating UI elements

SilkTest technologies supported

Web Browser
(Internet Explorer 6,
7, 8 and 9, Firefox
3.0, 3.5 and 3.6, 4.0)

Java GUIs (Eclipse
3.0 - 3.6, SWT,
AWT/Swing)

Microsoft WinForms
(.NET 2.0, 3.0, 3.5,
3.5 SP1, 4.0) 32 and
64 bit

Microsoft WPF (.NET
3.5 SP1, 4.0) 32 and
64 bit

Native GUIs - Win32
(32 and 64 bit)

Adobe Flash v4.0,
SAP (SAPGUI client
7.1, 7.2)

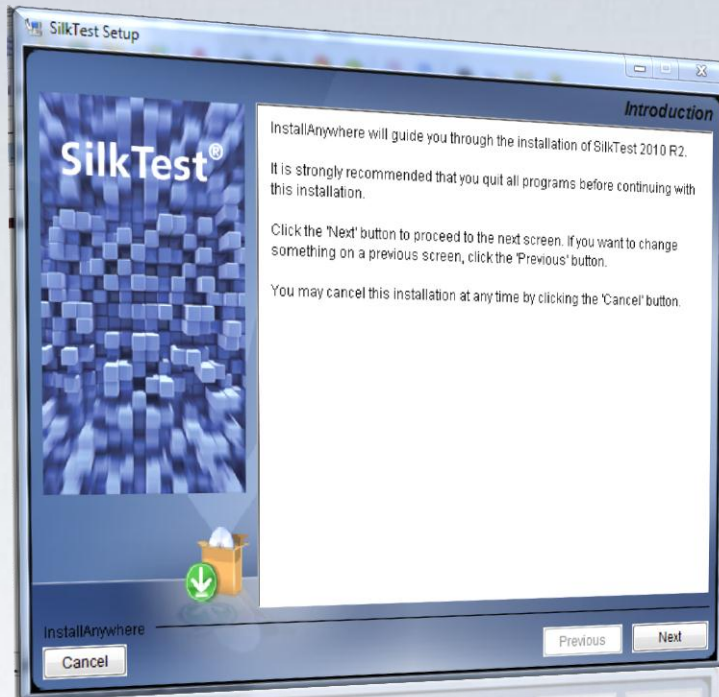
What is Silk4NET?



Is a powerful plug-in for Visual Studio 2010, deliver advanced automated testing capabilities.

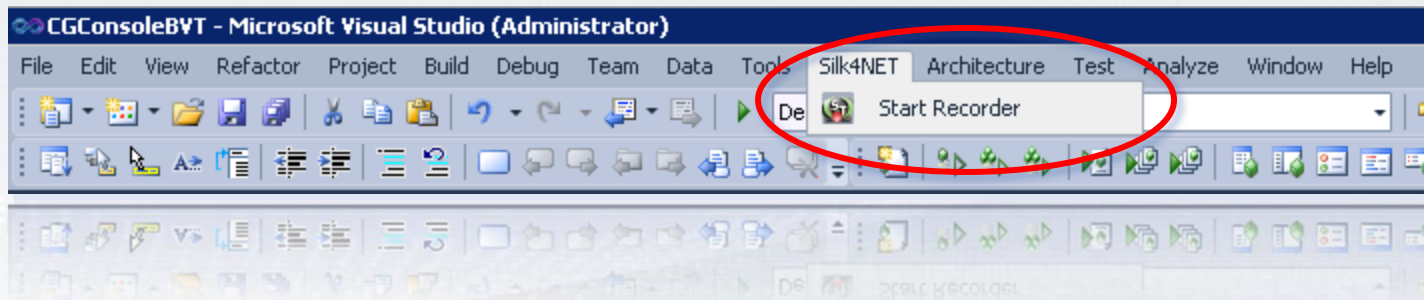
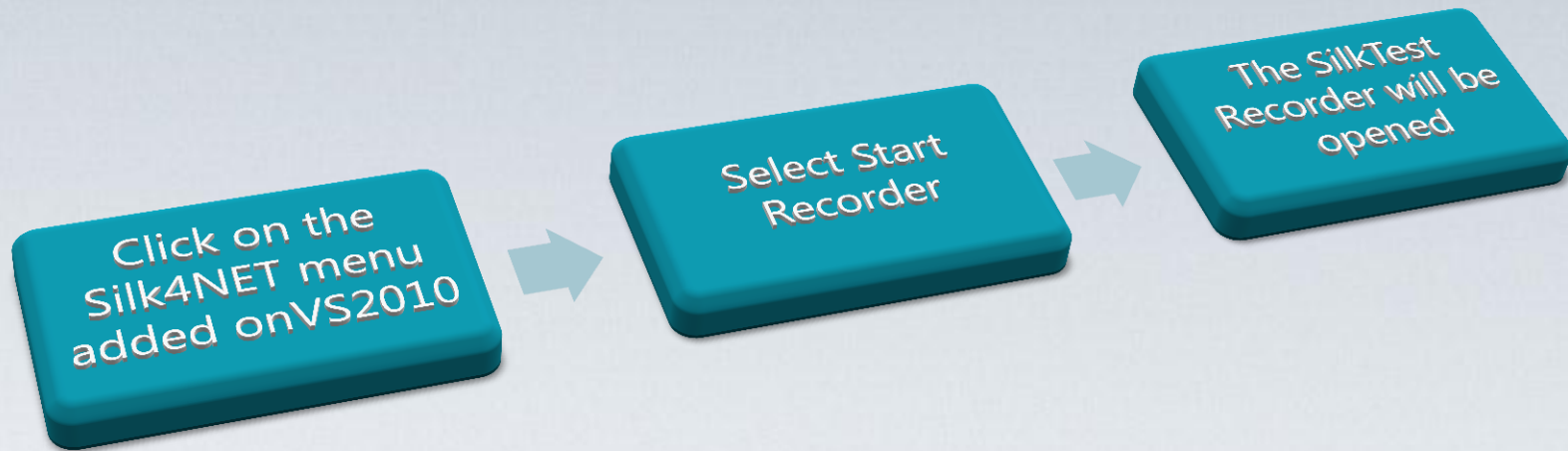
- Is a set of classes for .NET framework 4.0
- It is based on SilkTest OpenAgent functionality
- Allow us to quickly create test automation framework in C# or VB.NET within Visual Studio.

Silk4NET Installation



Silk4NET is
automatically installed
when we install SilkTest
(VS2010 required)

How to use Silk4NET



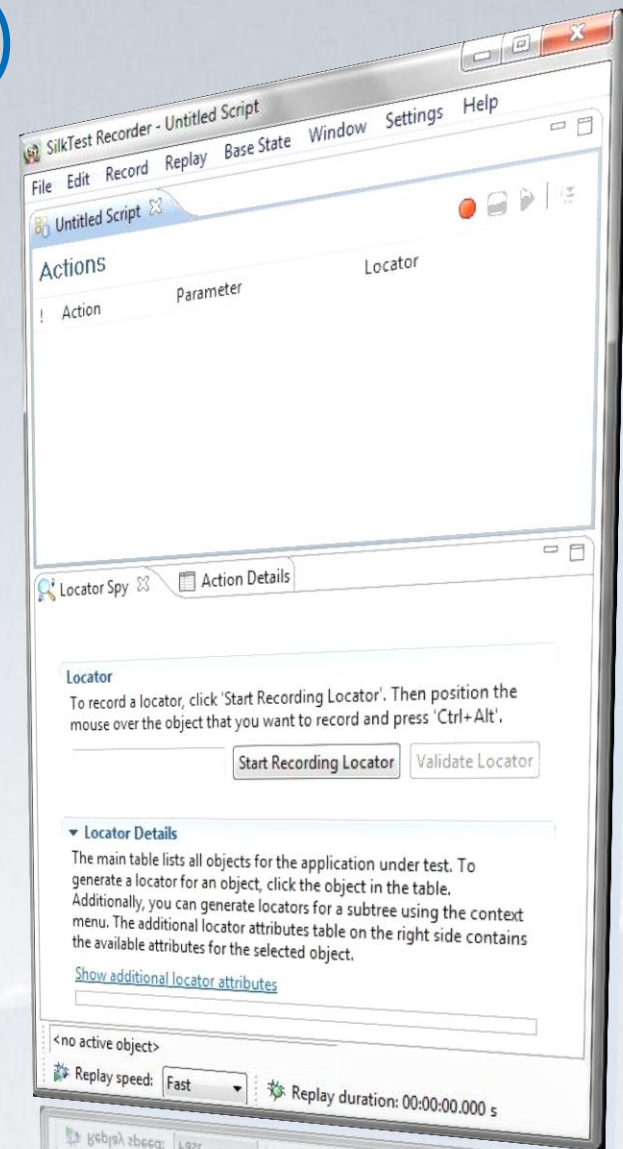
How to use Silk4NET (cont)

Click on Record button will start recording the application under test.

Once you completed recording, Click on Stop button

1. Click on File, select Export option, use the assistant
2. Select the steps you want exportt, Copy and Paste on Visual Studio.

You can configure the default client (could be .NET language C#)



DEMO

Summary

Technologies supported by SilkTest Open Agent are also supported by Silk4NET, so you can automate several technologies, eg: web applications, Java apps, WPF, etc

Silk4NET comes with SilkTest installer.

Allow us to quickly create test automation framework in C# or VB.NET within Visual Studio.

We saw that create SilkTest ATCs and integrate them to VS2010 is easy with Silk4NET.

Next Steps

- http://techpubs.borland.com/silk_gauntlet/SilkTest/2010R2/tutorials/Silk4NET.pdf
- <http://www.borland.com/resources/en/pdf/products/silk/Borland-Silk4Net.pdf>
- <http://visualstudiogallery.msdn.microsoft.com/96c50ecc-b5e5-417b-8f93-eb6b5b46994c>
- <http://jorgemontano.wordpress.com/2011/06/17/silk4net-a-way-to-integrate-visual-studio-2010-and-silk-test/>
- <http://jorgemontanoblog.wordpress.com>

The Microsoft logo is centered on the page, rendered in a bold, black, sans-serif font. Below it, the tagline "Your potential. Our passion." is written in a smaller, italicized, black, sans-serif font. The background is a light blue gradient with a subtle, wavy pattern of small white dots at the bottom.

Microsoft[®]

Your potential. Our passion.[®]

© 2011 Microsoft Corporation. All rights reserved. Microsoft, Visual Studio, the Visual Studio logo, and [list other trademarks referenced] are trademarks of the Microsoft group of companies.

The information herein is for informational purposes only and represents the current view of Microsoft Corporation as of the date of this presentation. Because Microsoft must respond to changing market conditions, it should not be interpreted to be a commitment on the part of Microsoft, and Microsoft cannot guarantee the accuracy of any information provided after the date of this presentation.

MICROSOFT MAKES NO WARRANTIES, EXPRESS, IMPLIED, OR STATUTORY, AS TO THE INFORMATION IN THIS PRESENTATION.